

DNA-Biobanken



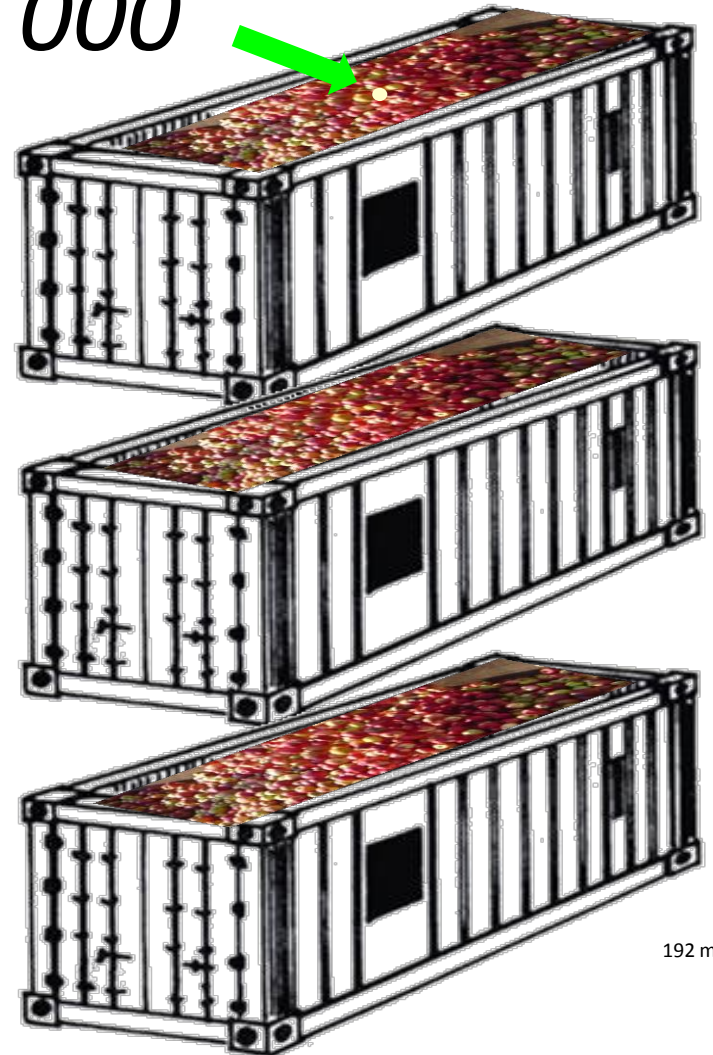
IQRA Biotech Services

Human DNA Bank

India

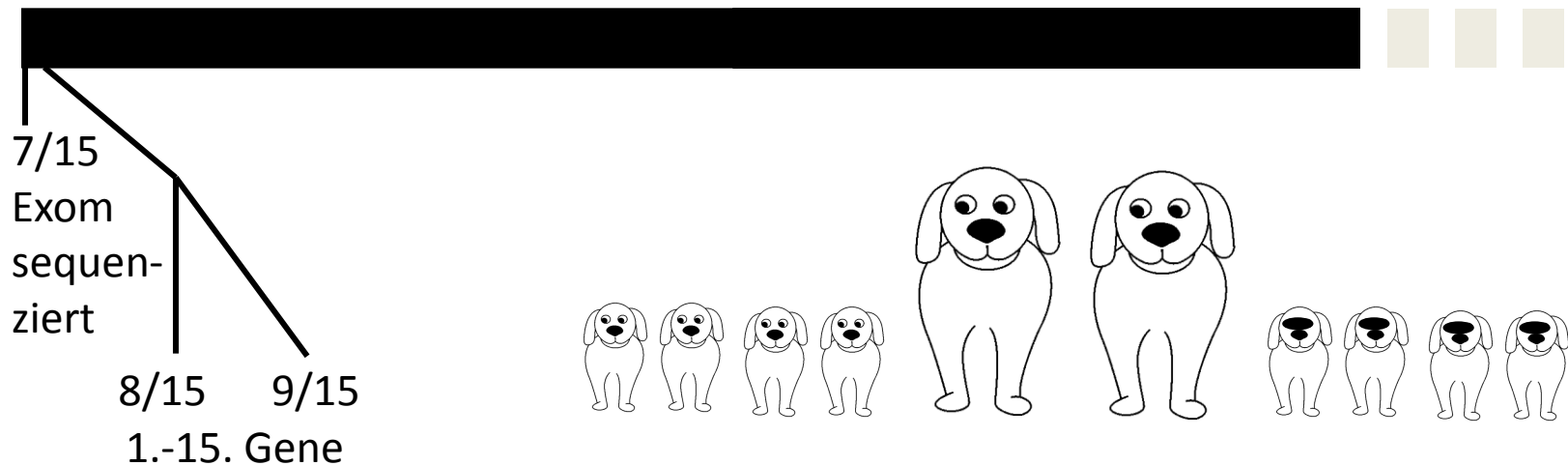
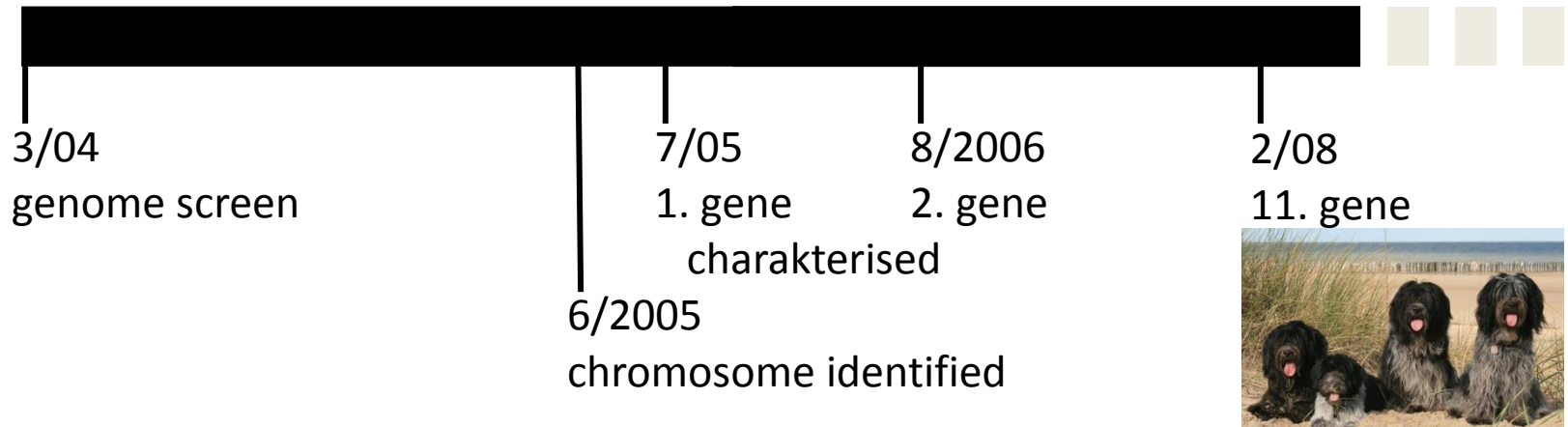
[FAQs](#) : [Contact Us](#) : [Home](#)

*der einzige wirklich Faulige
unter 372 000*

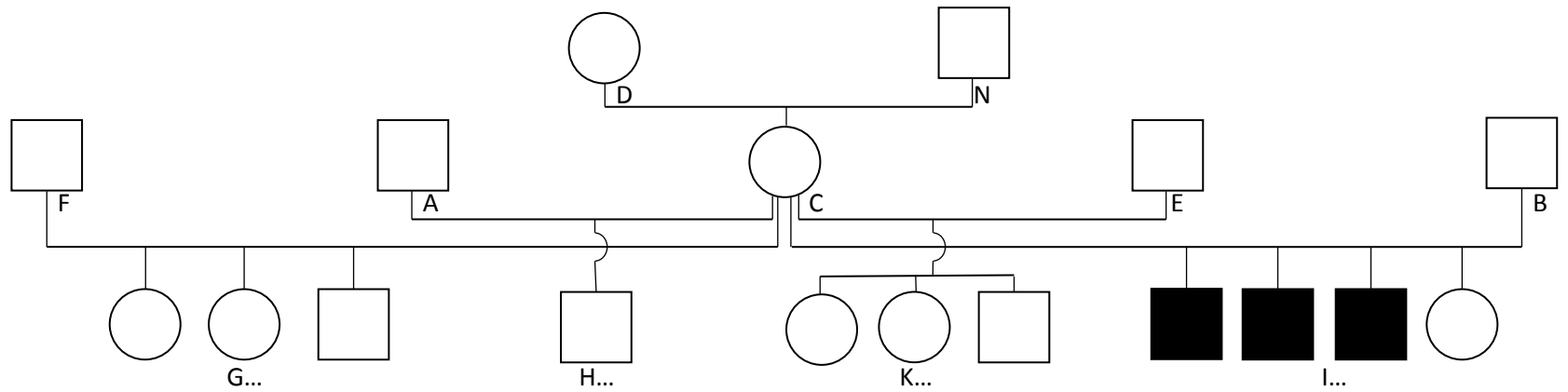


192 m³

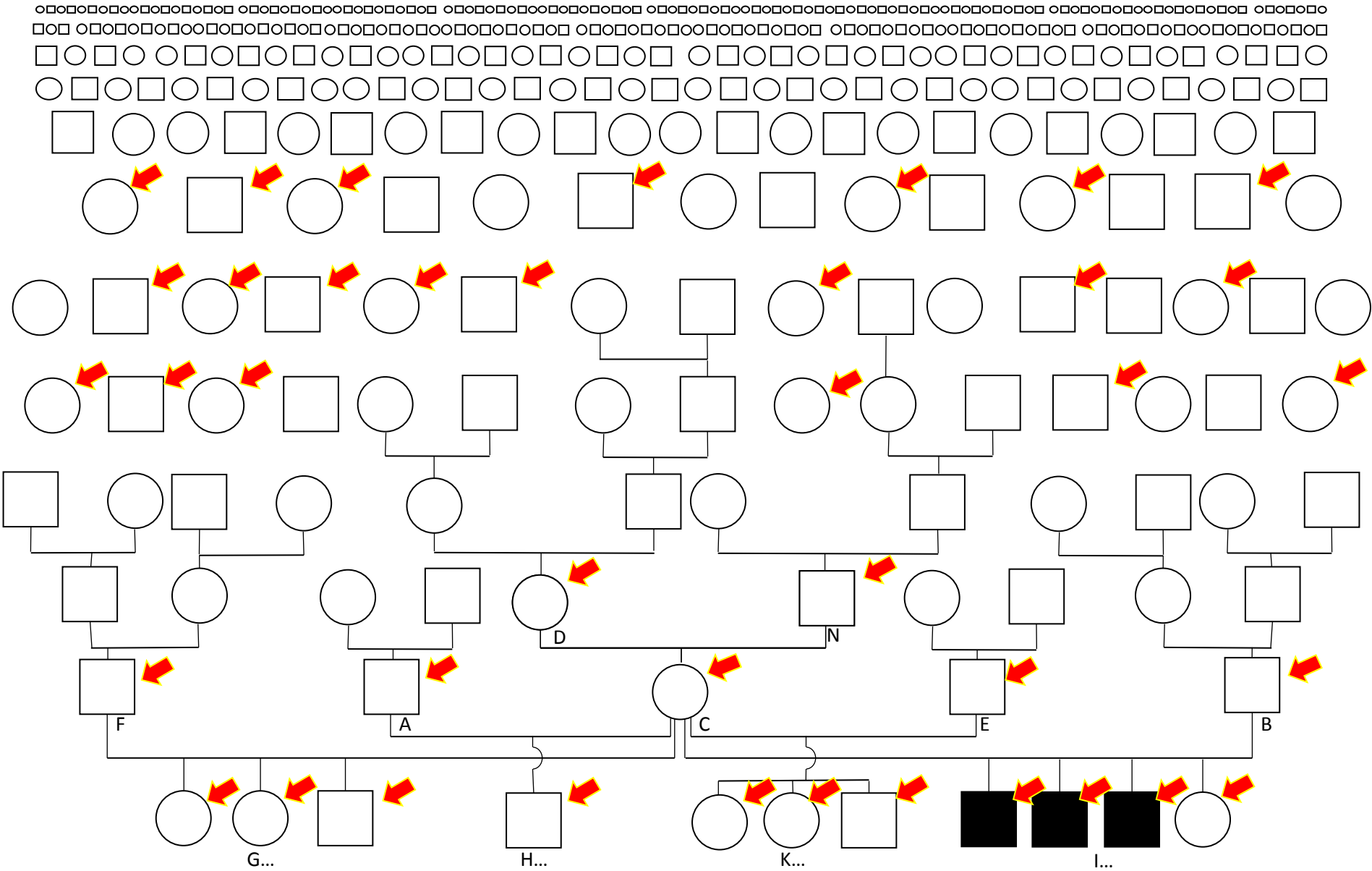
PRA bei Schapendoes + Weimaraner



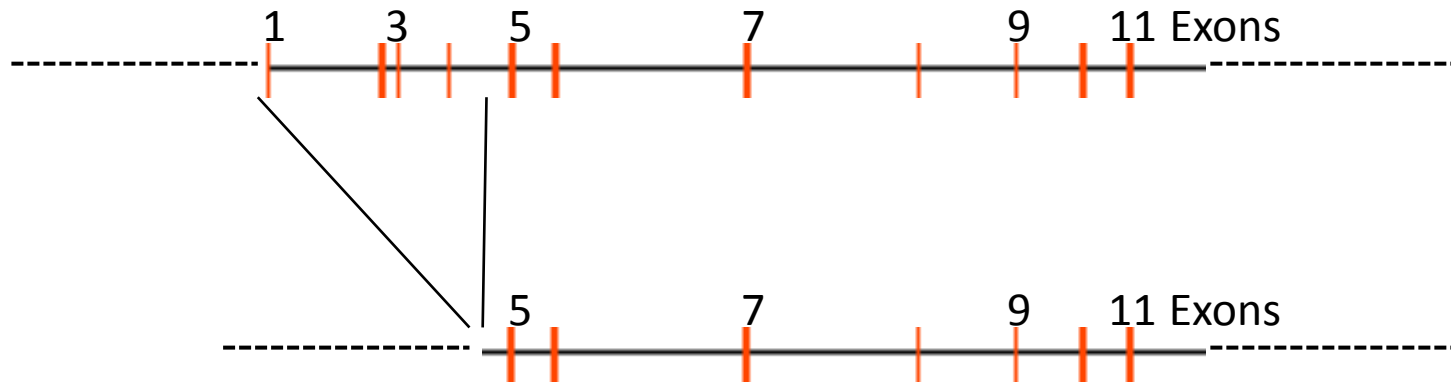
Erbleiden ?



DNA-Biobank







Stückverlust im Gen (Deletion)



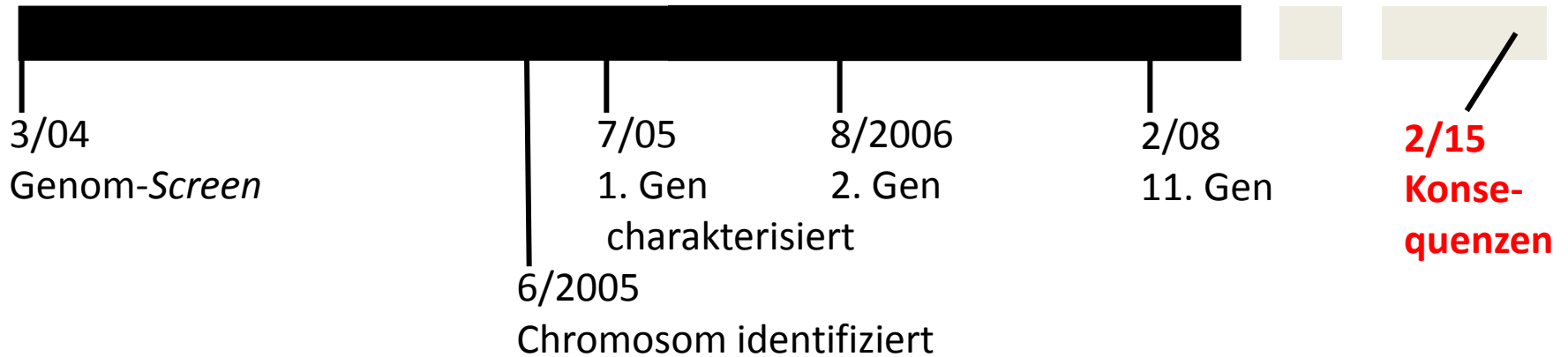
→ kein funktionierendes Protein

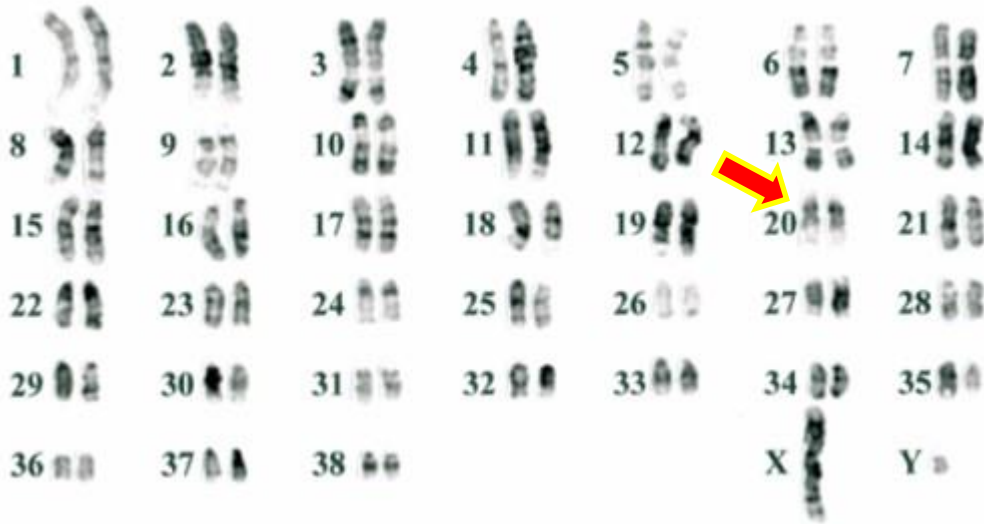
→ Netzhautdegeneration → Sehstörungen

DNA-Profile, DNA-Biobanken und Epigenetik

-  DNA-Profile
-  DNA-Biobanken
-  Epigenetik
-  Schlussfolgerungen

PRA in Schapendoes





Chromosomen des Hundes

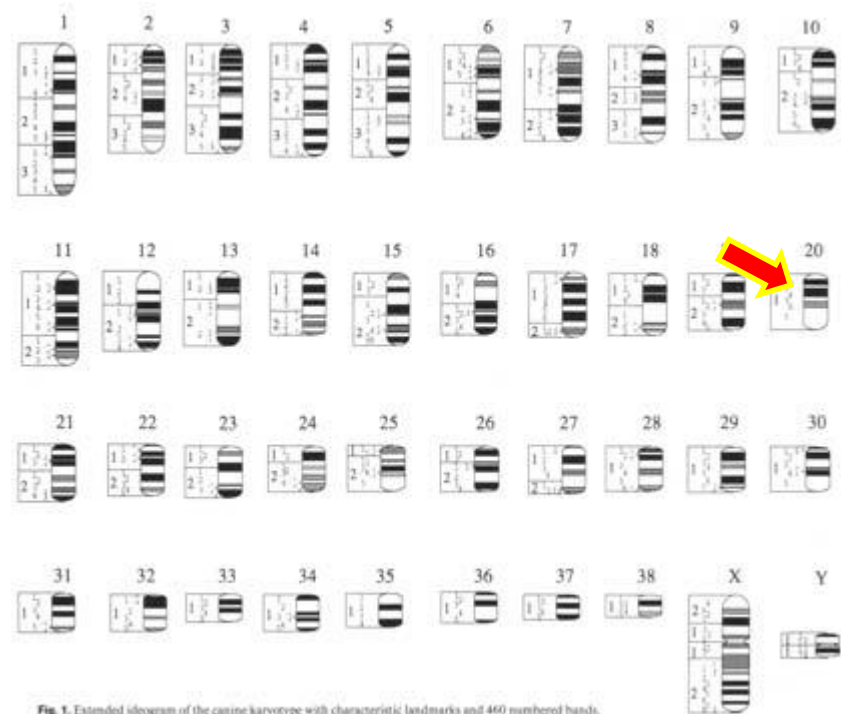
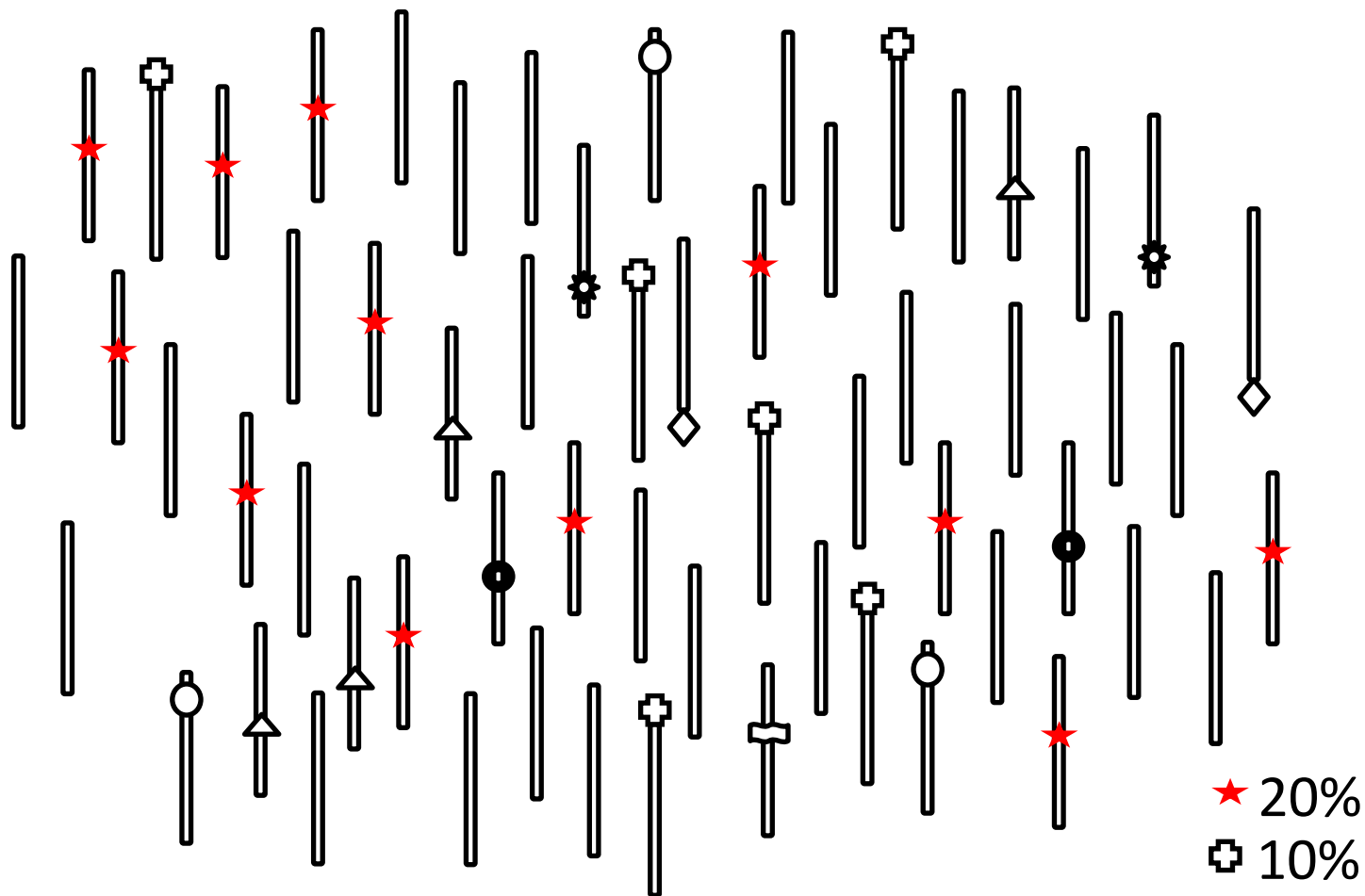
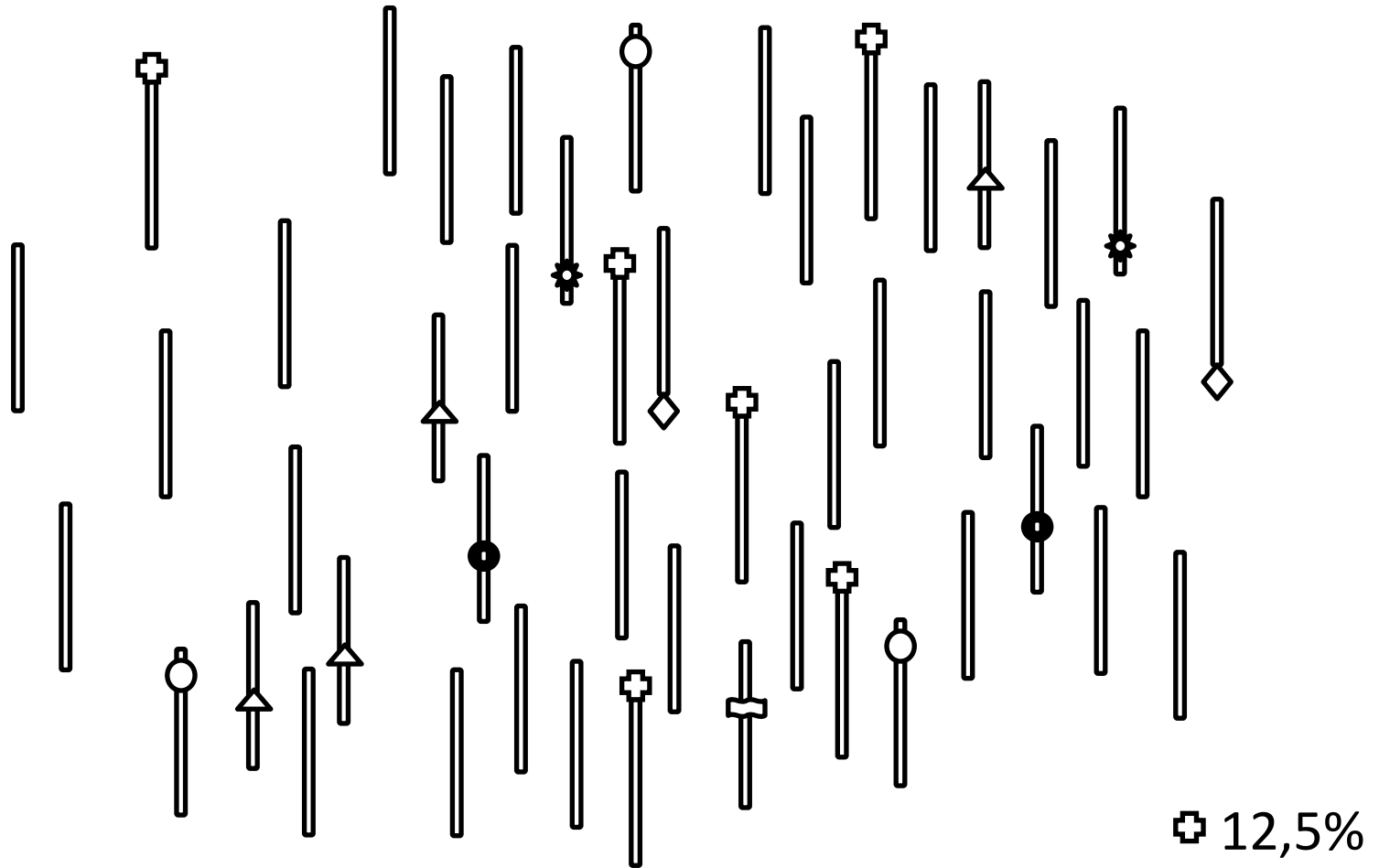


Fig. 1. Extended ideogram of the canine karyotype with characteristic landmarks and 460 numbered bands.

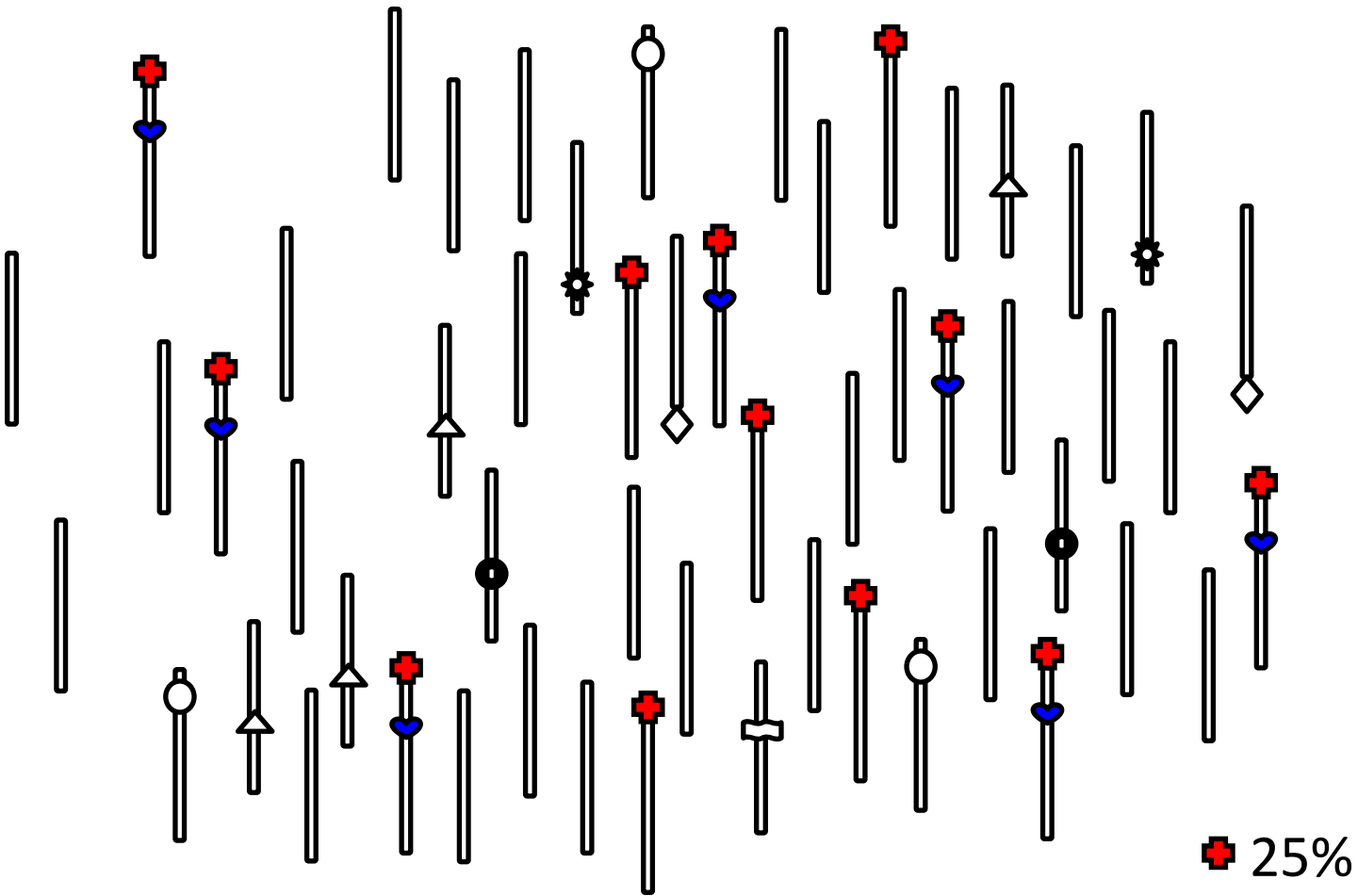
alle Chromosomen 20 vor DNA-Test



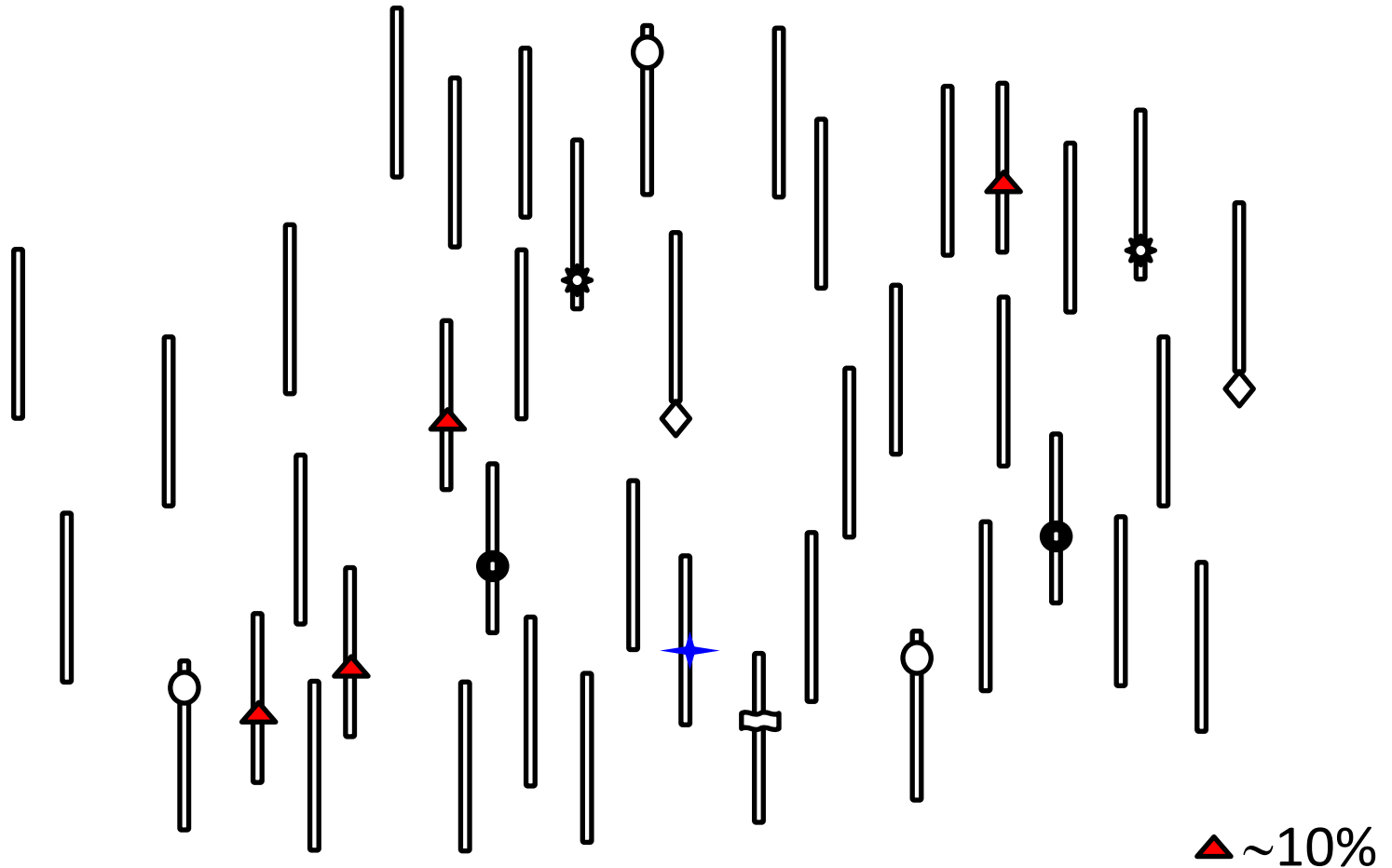
Chromosomen 20 nach selektiver Zucht



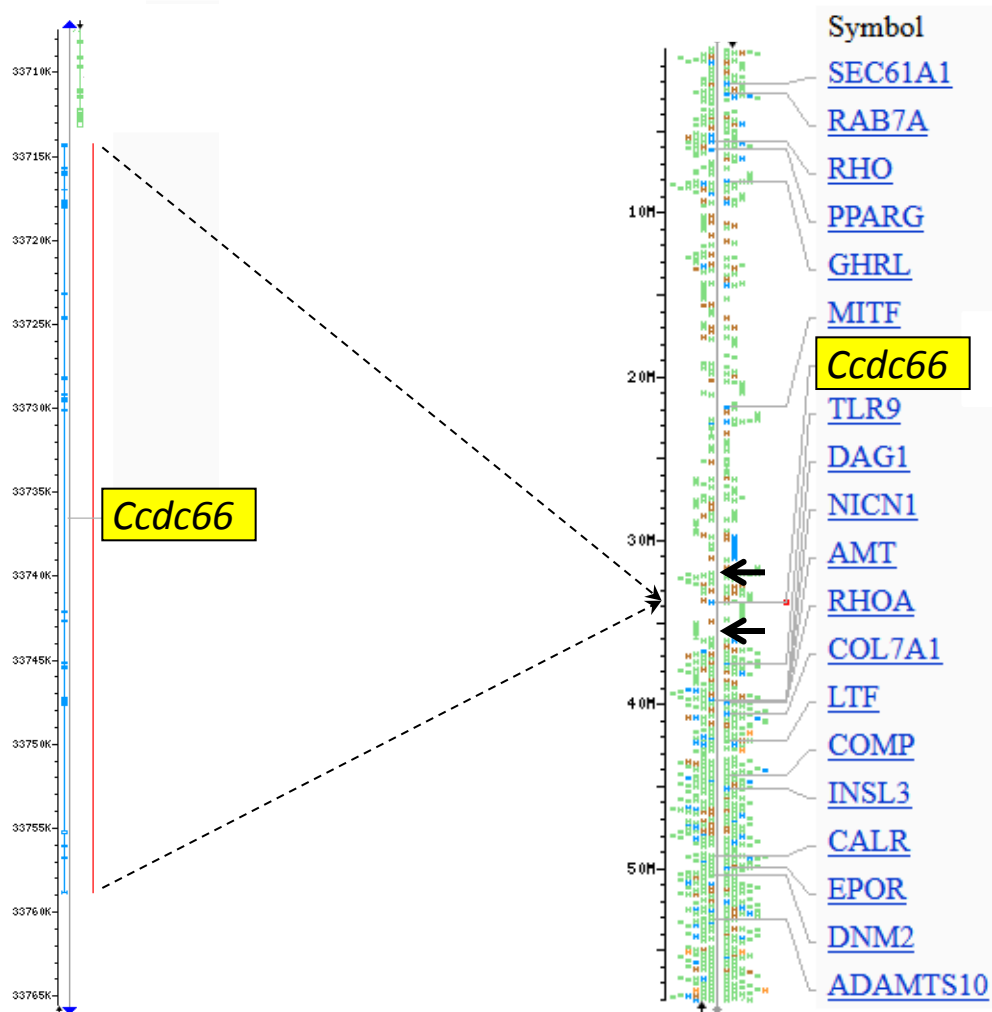
Chromosomen 20 bei Exterieur-geleiteter Zucht



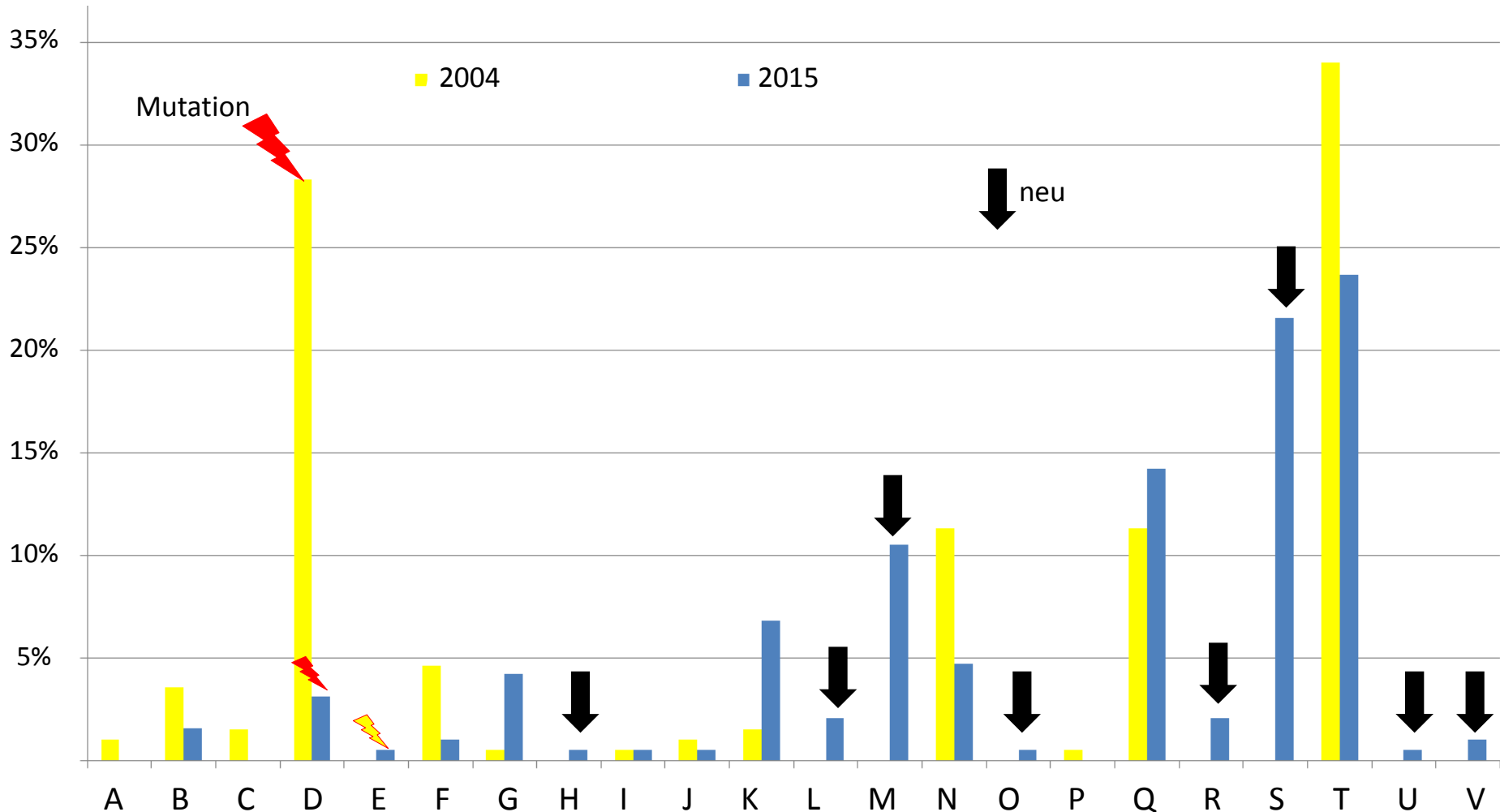
Chromosom 20 → ↓ variabel



Ccdc66 Gen auf Chromosom 20



variable Marker (be)im *Ccdc66* Gen



→ neue Haplotypen, genetische Variabilität ↑